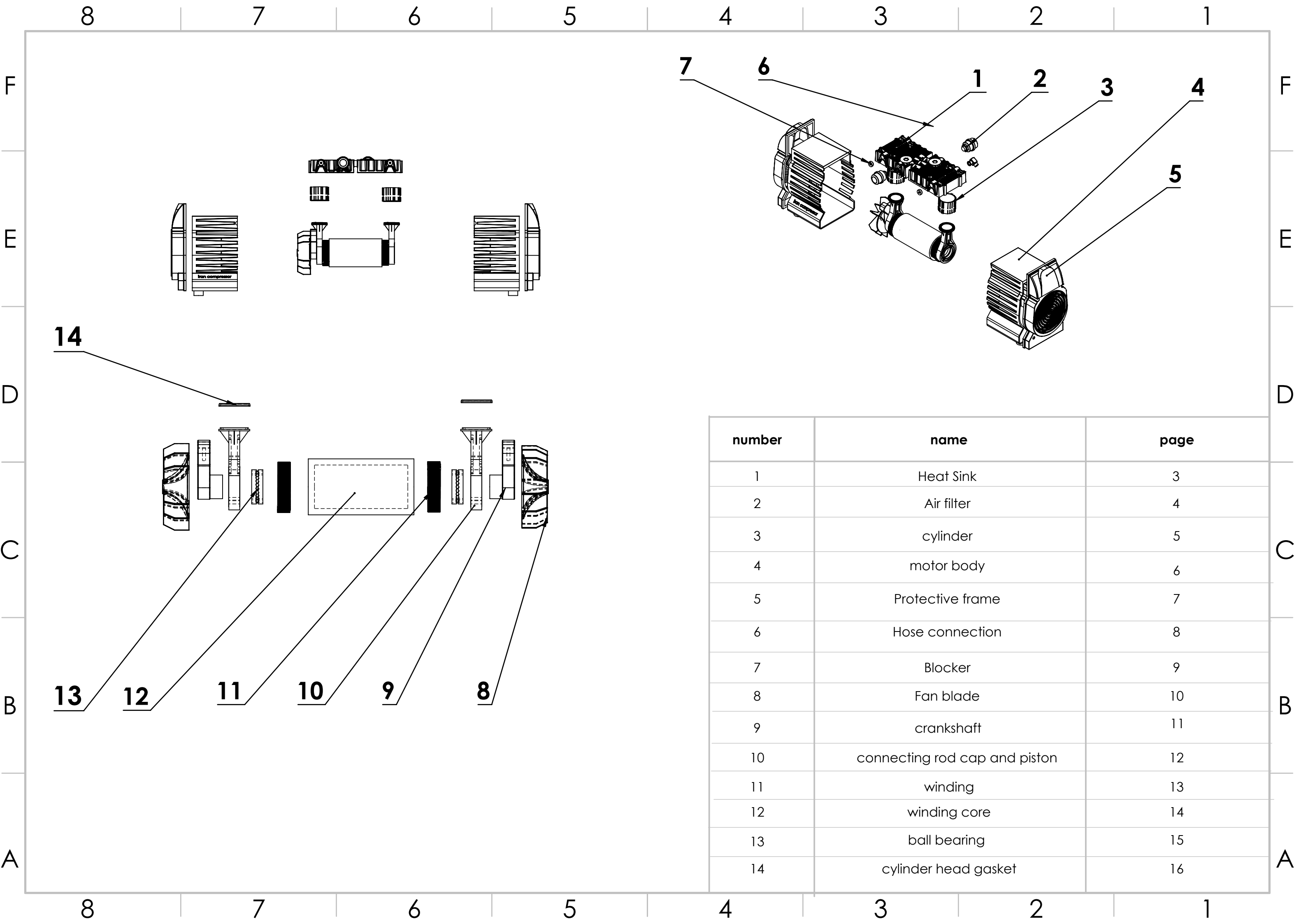
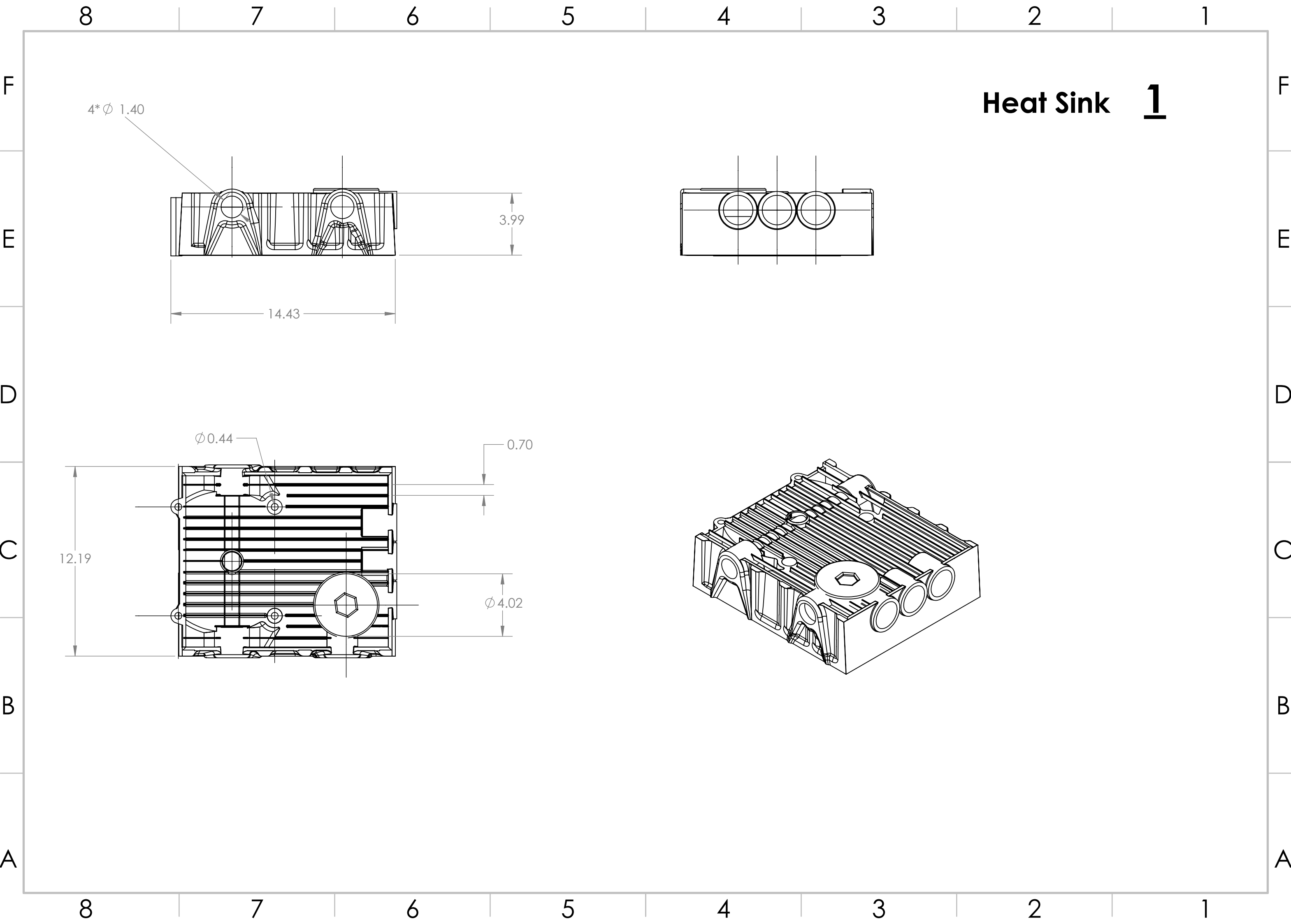
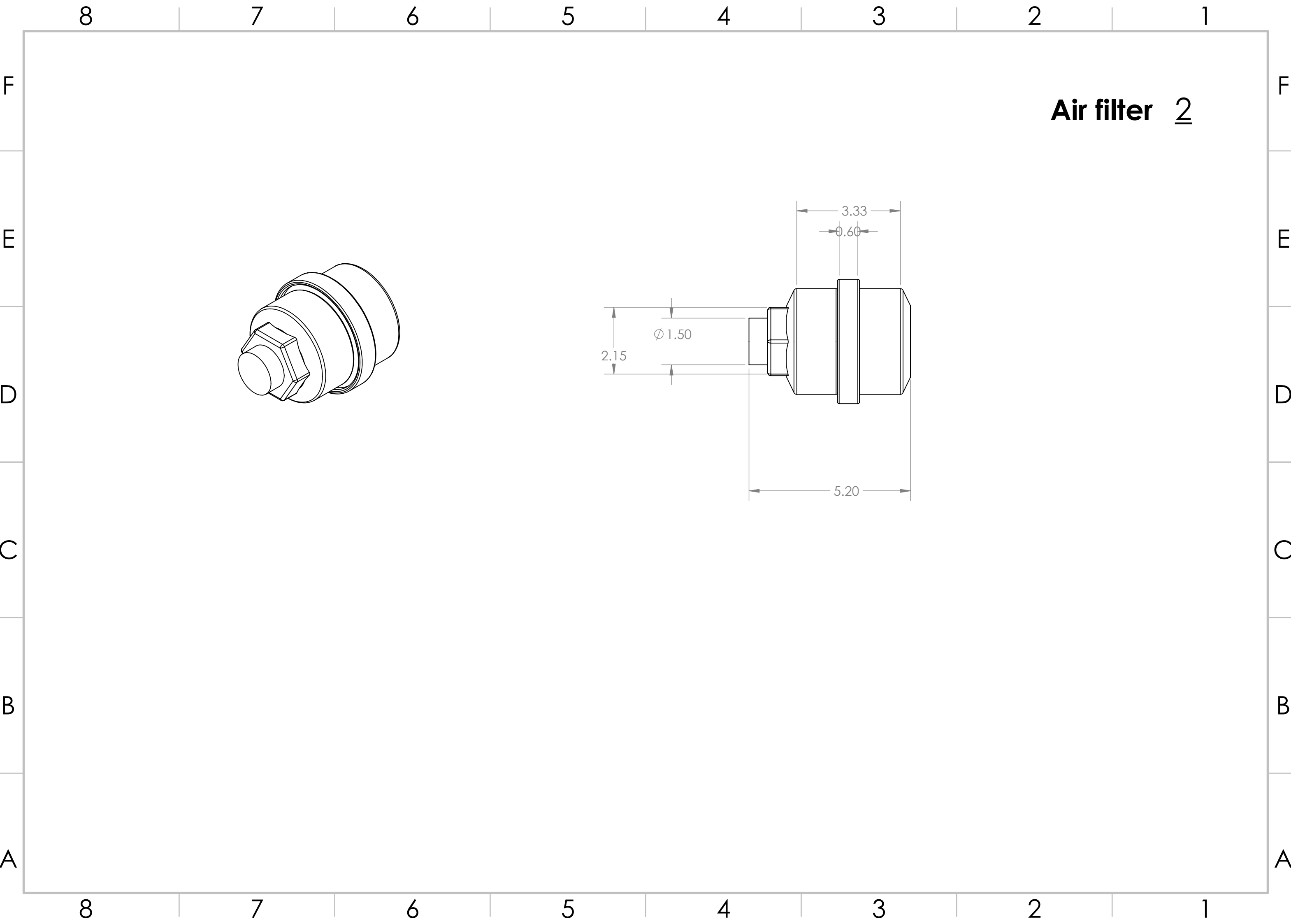


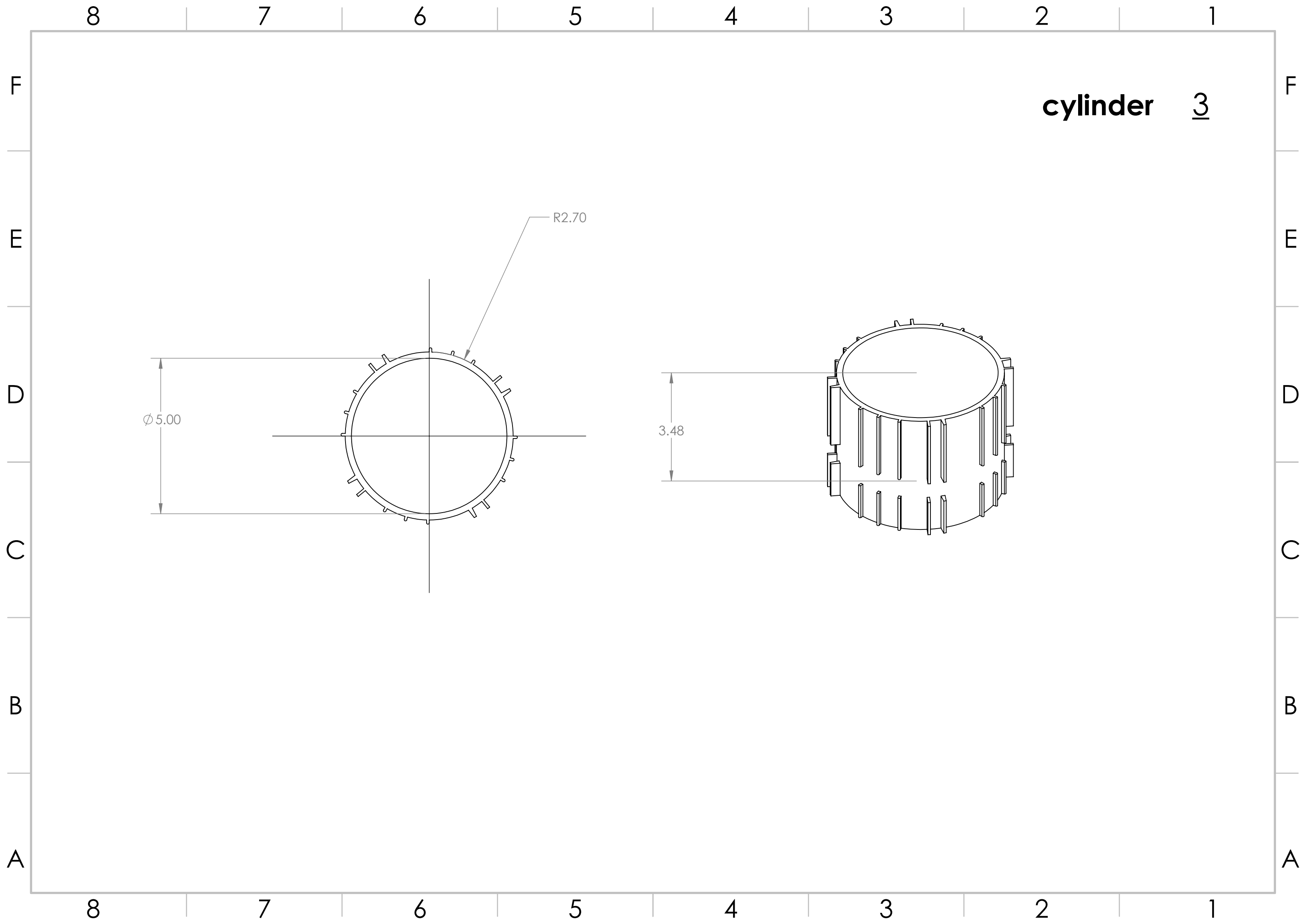
model	pressure	power	motor speed	winding material	overload	power supply	weight
olf 1800	8-10 bar	1800 W	1480 rpm	copper coil	thermal	220v-50Hz	20.5 kg
brand name motor		bearing brand		made by	mechanical engineer		
jun air		nachi bearing (japan)		iran compressor	arshia azizi 09337336782		

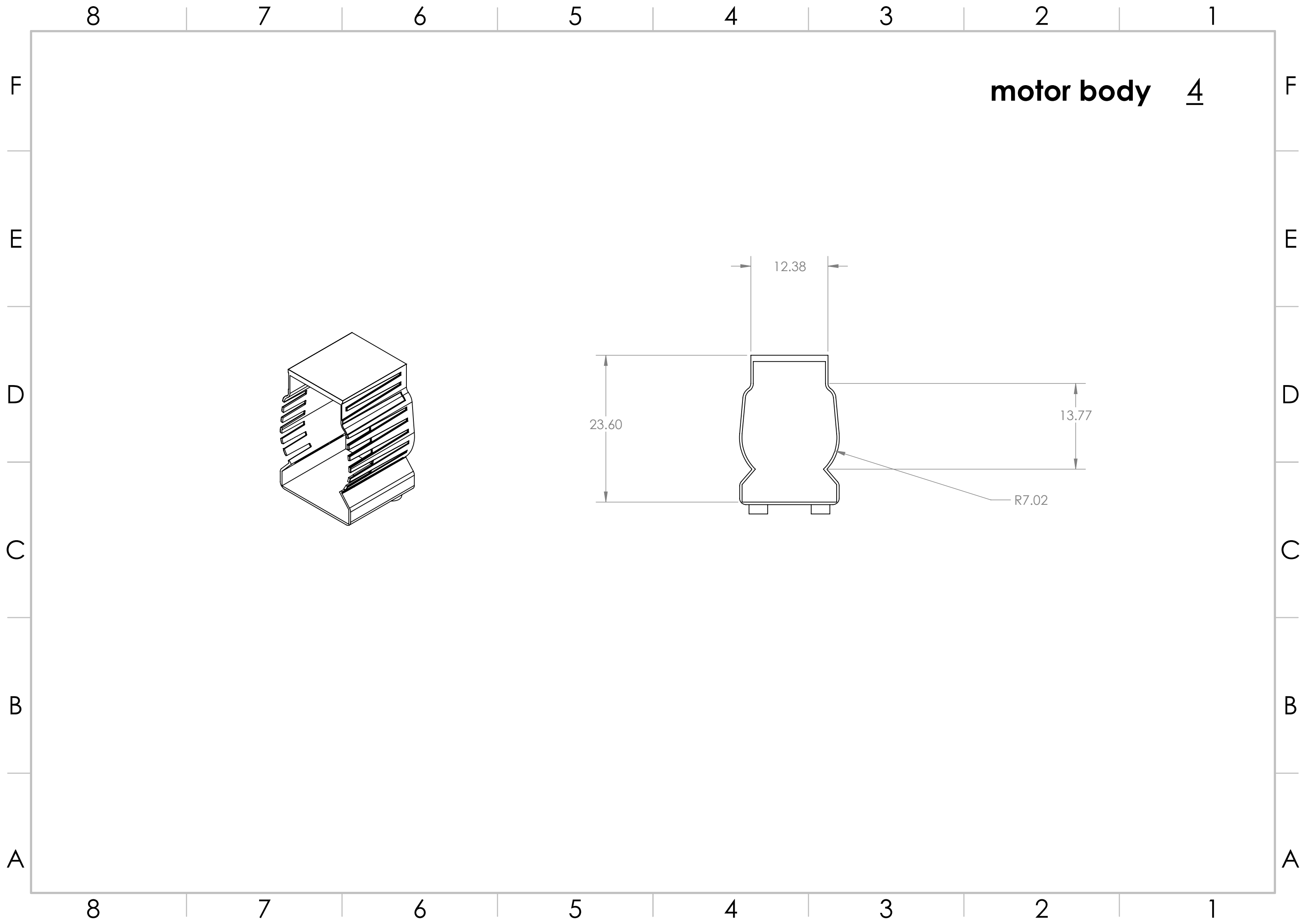


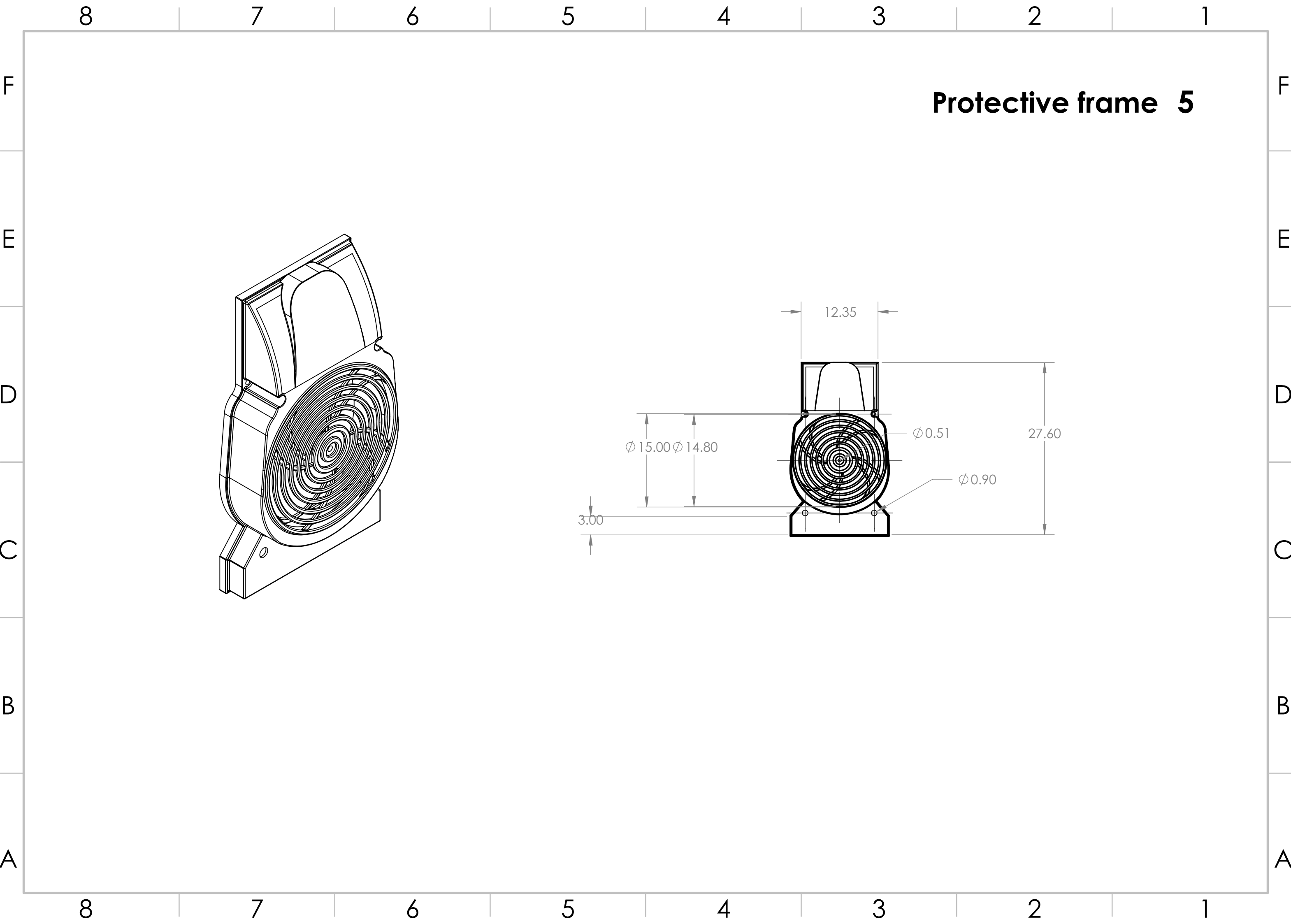
number	name	page
1	Heat Sink	3
2	Air filter	4
3	cylinder	5
4	motor body	6
5	Protective frame	7
6	Hose connection	8
7	Blocker	9
8	Fan blade	10
9	crankshaft	11
10	connecting rod cap and piston	12
11	winding	13
12	winding core	14
13	ball bearing	15
14	cylinder head gasket	16



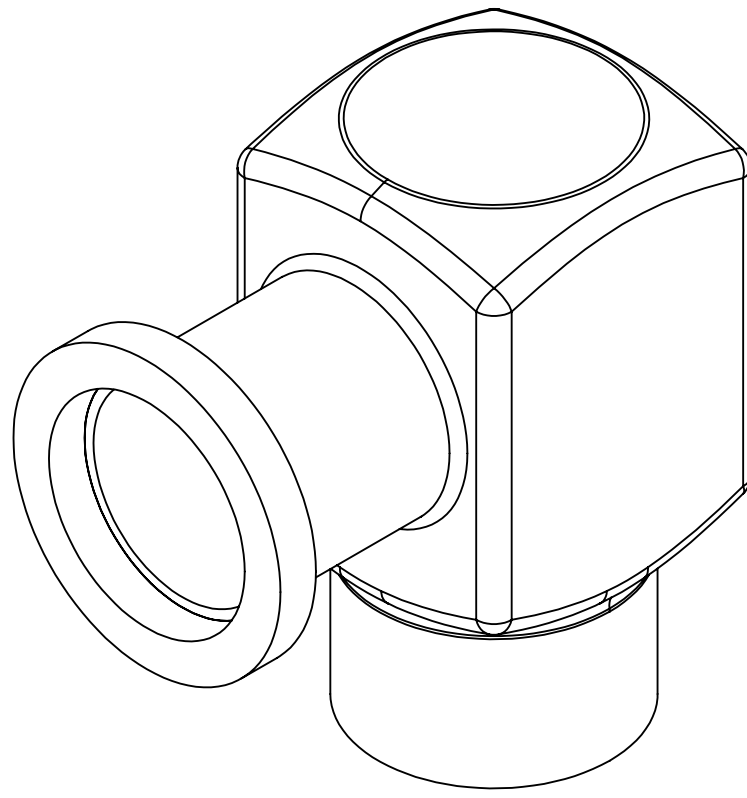
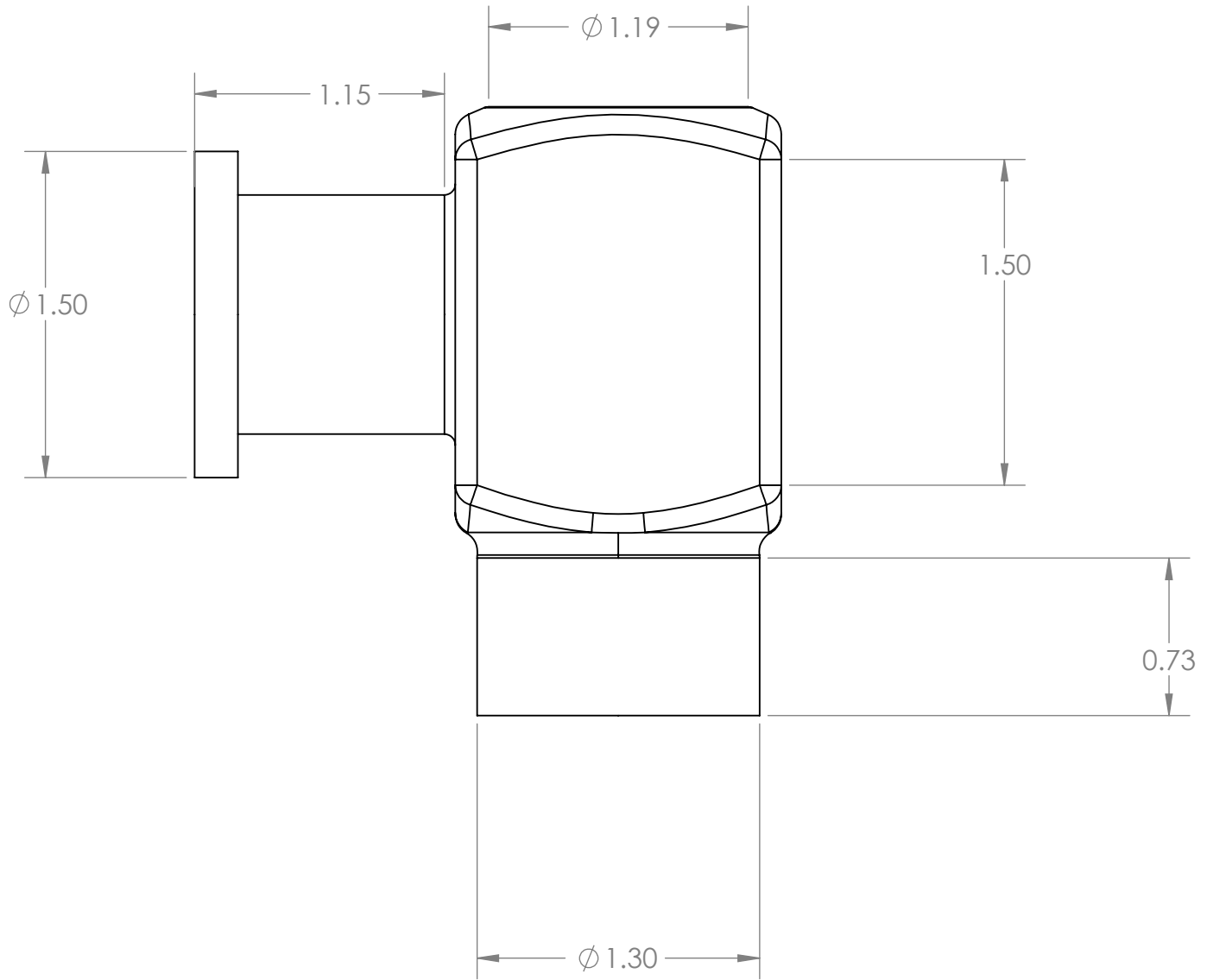


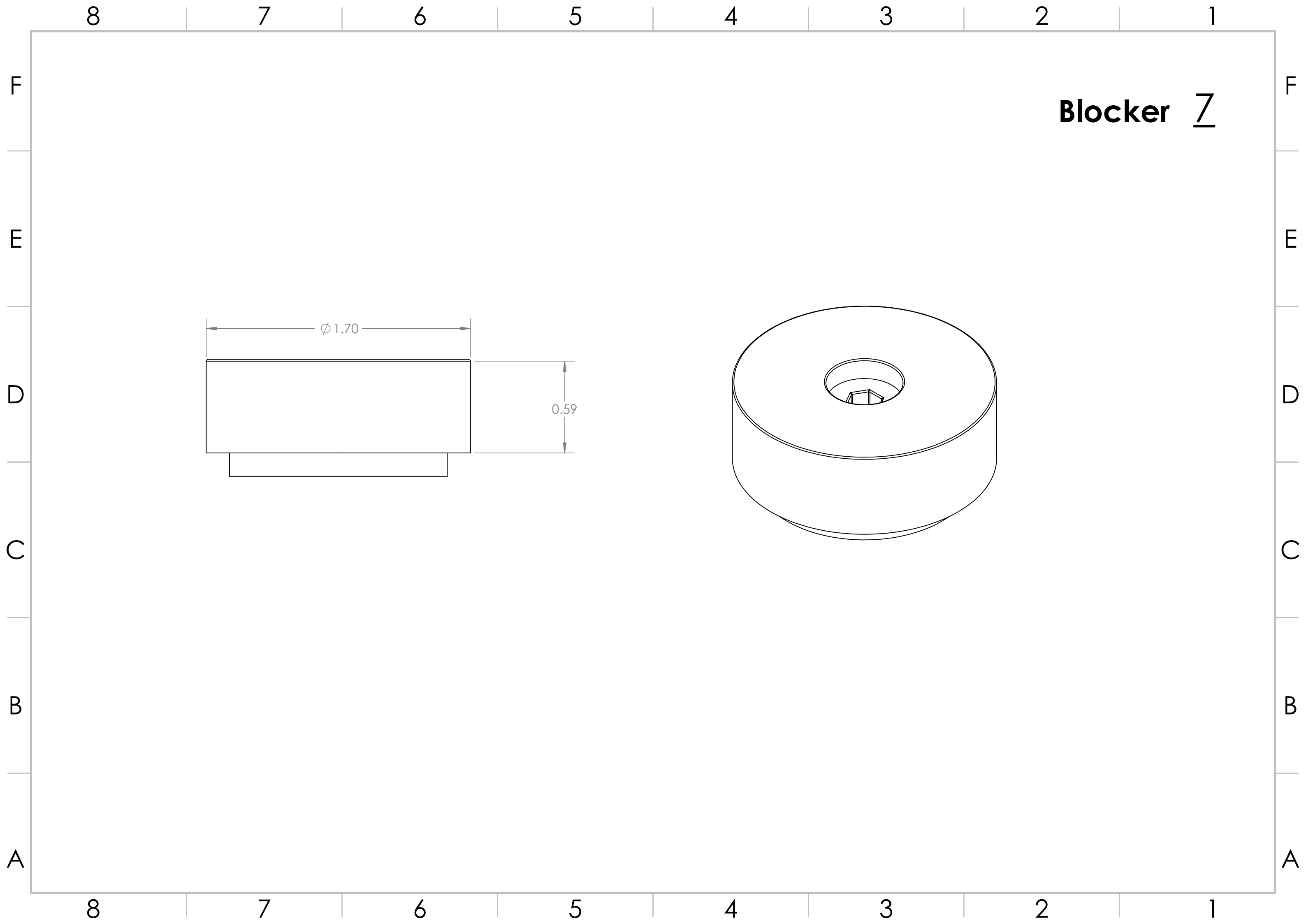


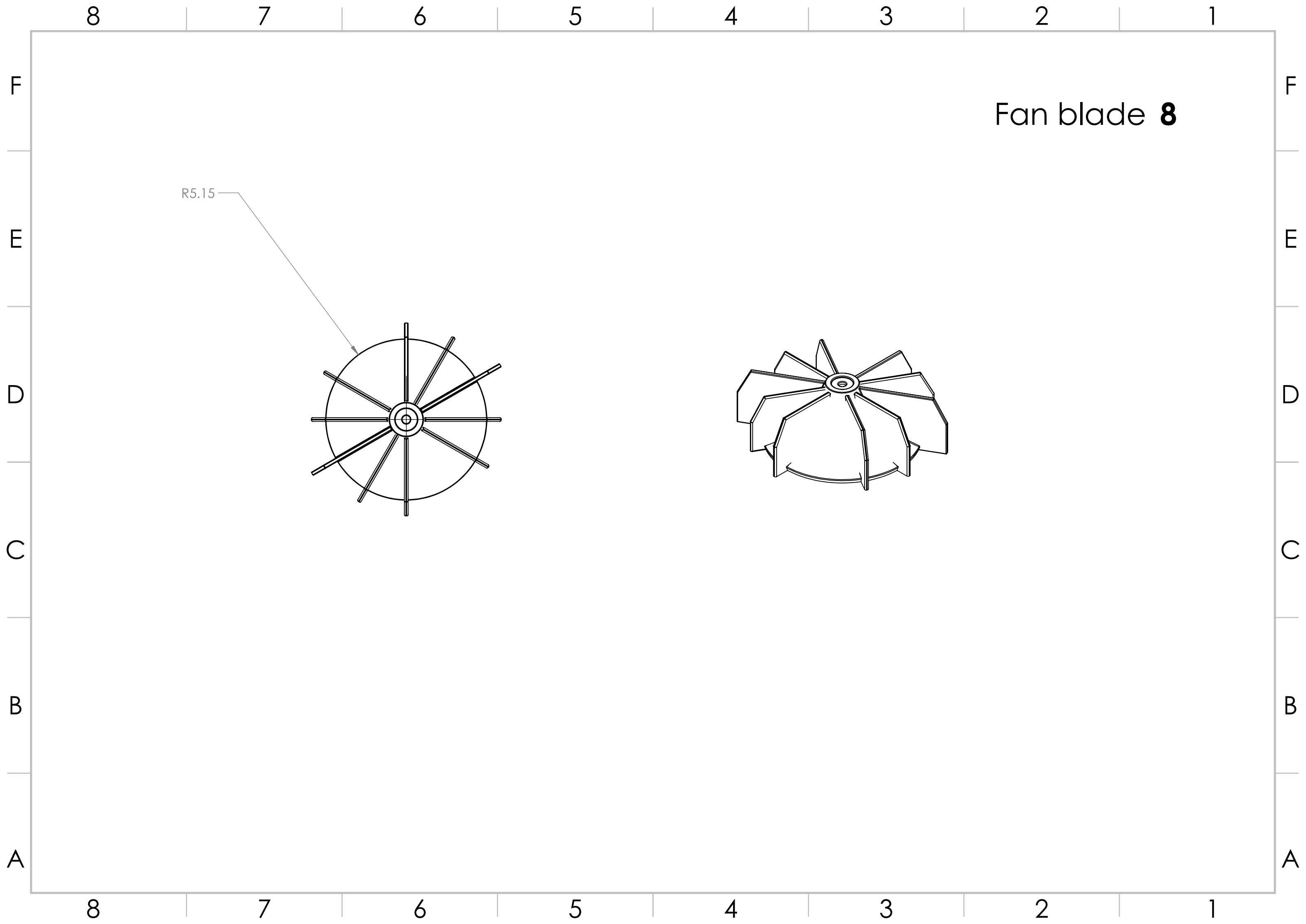


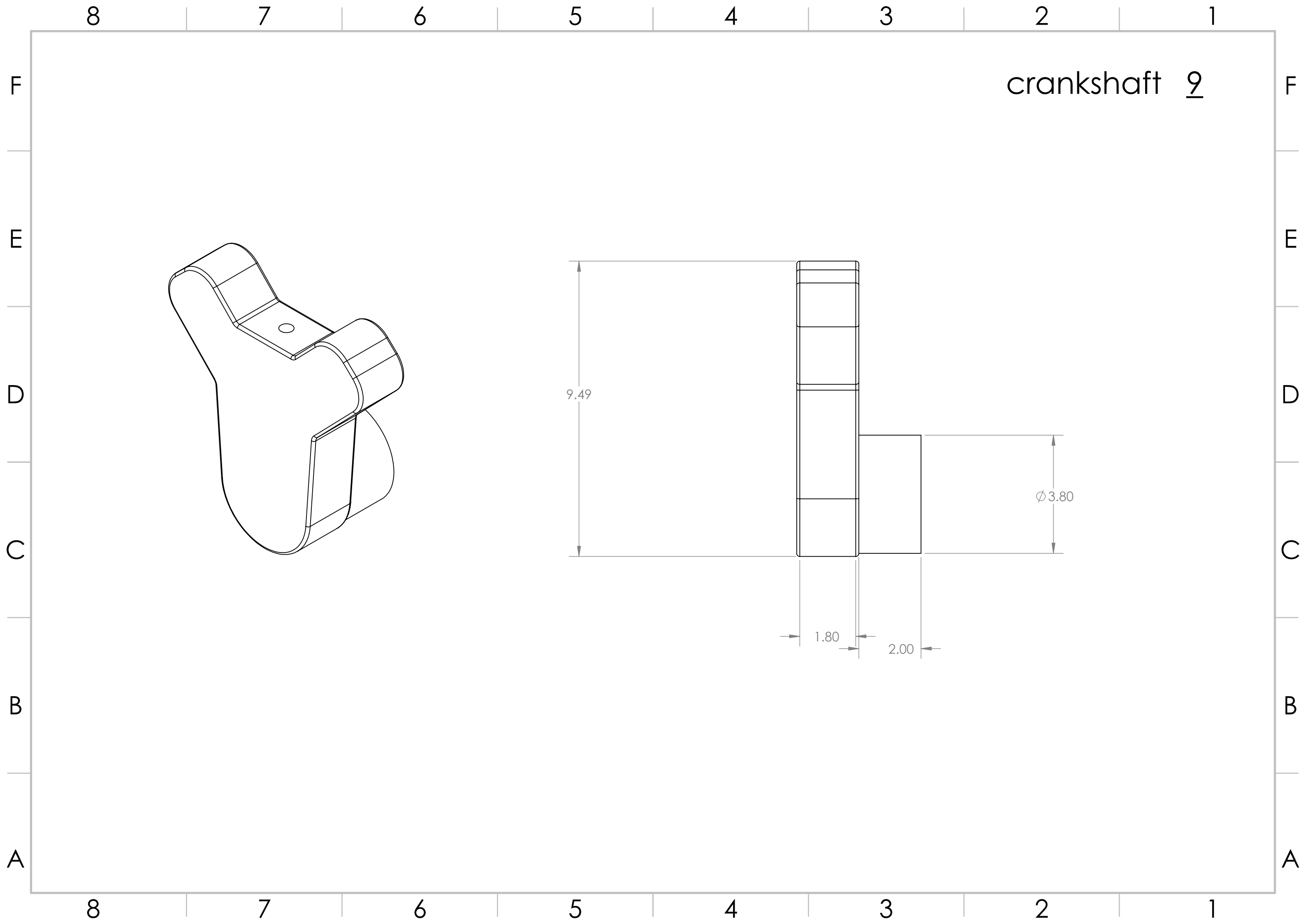


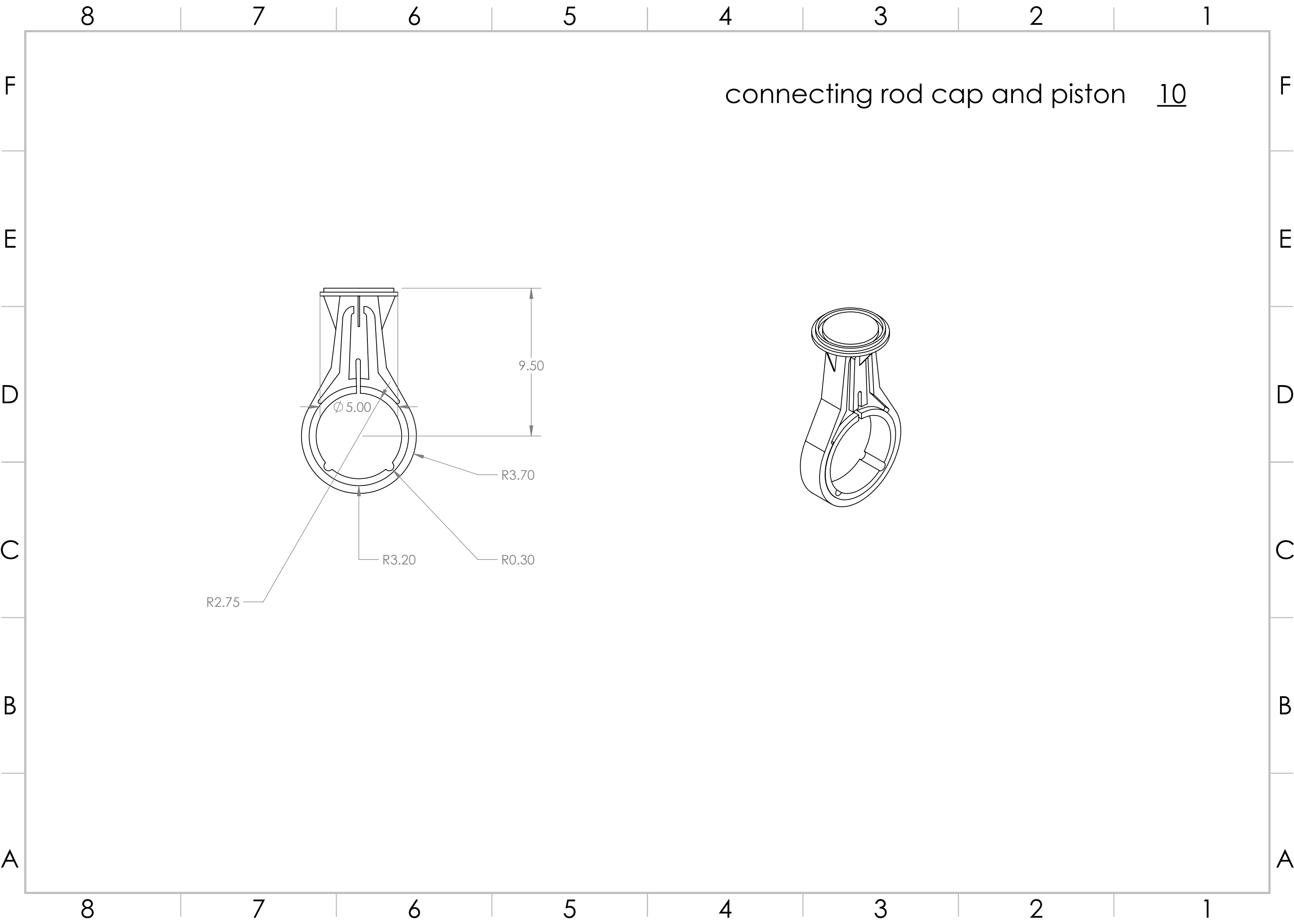
Hose connection 6

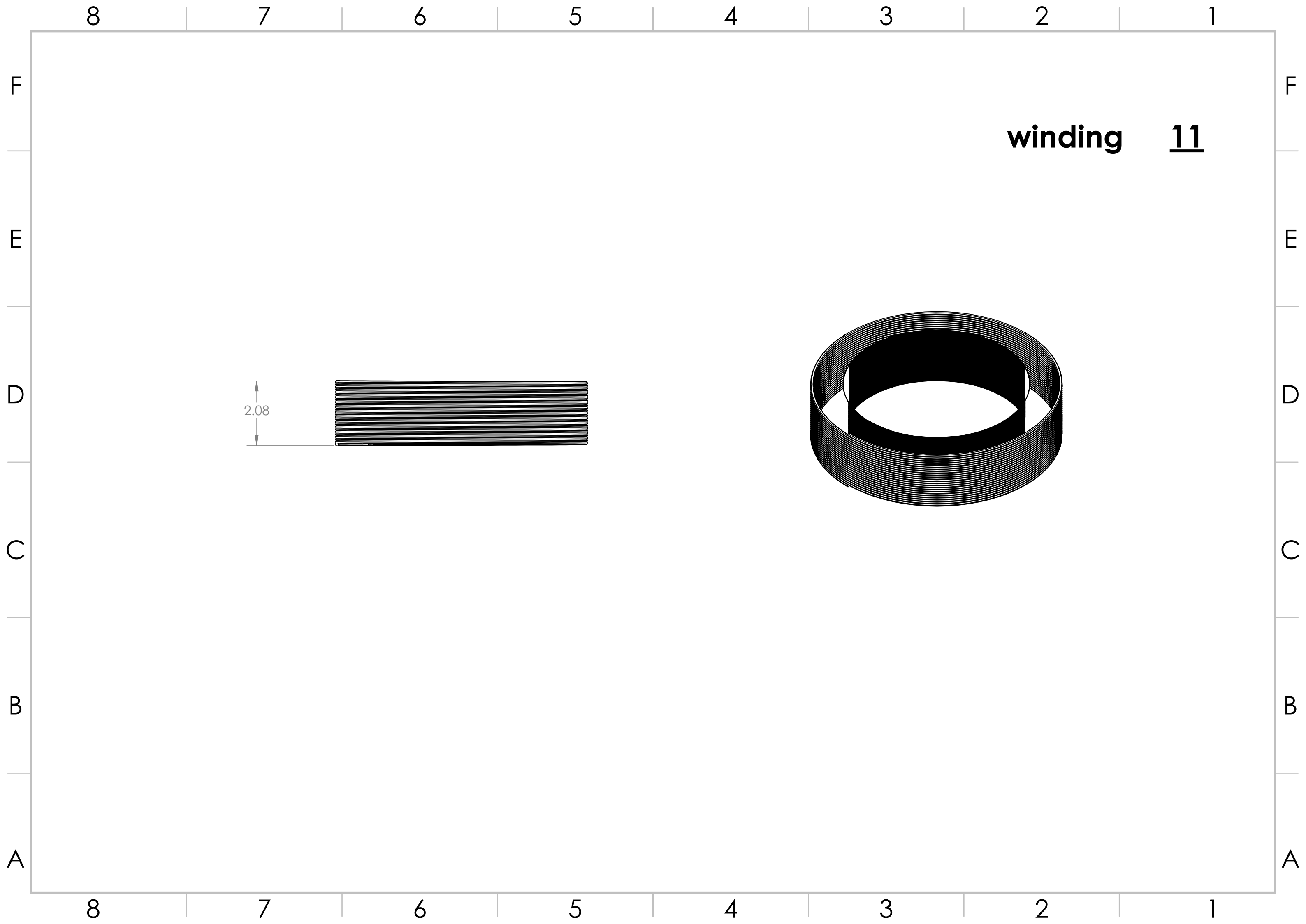


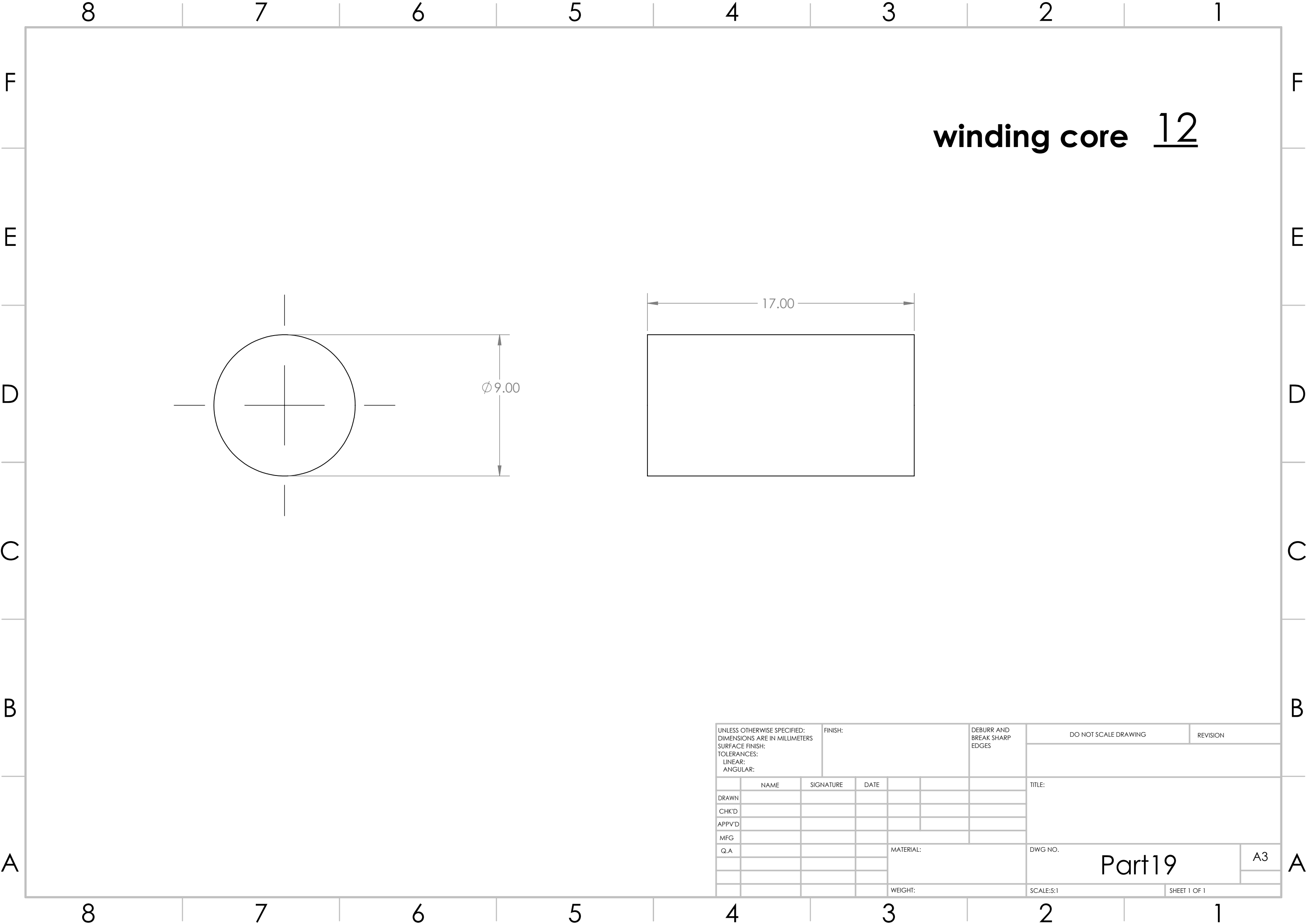




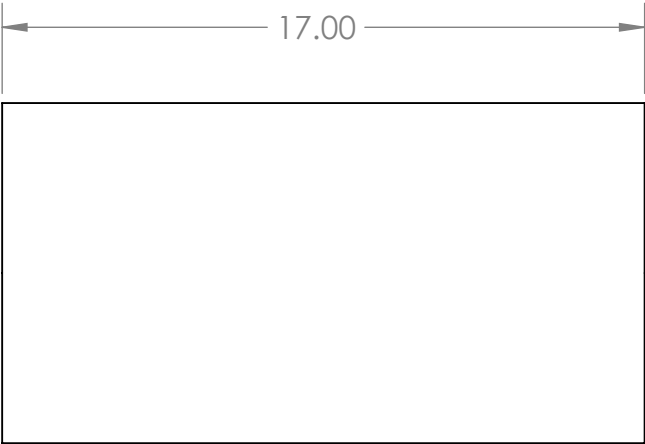
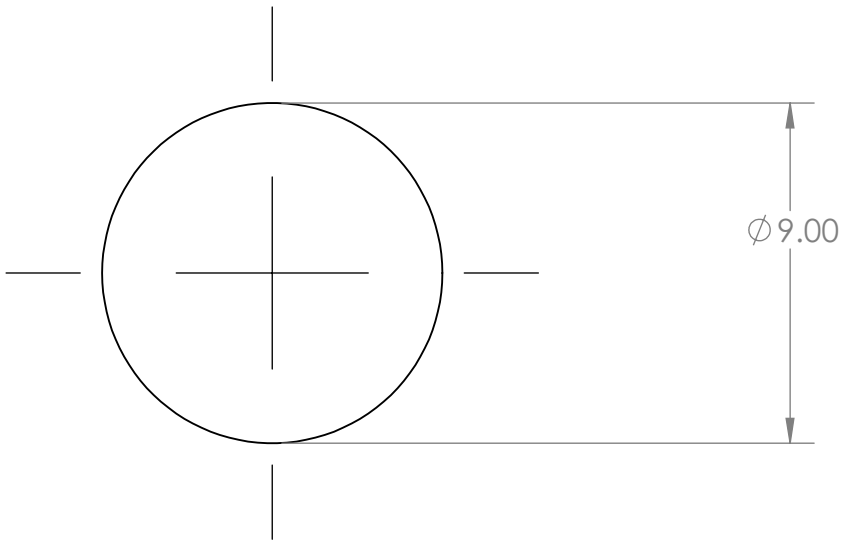








winding core 12



UNLESS OTHERWISE SPECIFIED: DIMENSIONS ARE IN MILLIMETERS SURFACE FINISH: TOLERANCES: LINEAR: ANGULAR:				FINISH:			DEBURR AND BREAK SHARP EDGES		DO NOT SCALE DRAWING	REVISION
	NAME	SIGNATURE	DATE						TITLE:	
DRAWN										
CHK'D										
APPV'D										
MFG										
Q.A									DWG NO. Part19	
									SCALE:5:1 SHEET 1 OF 1	
									A3	

